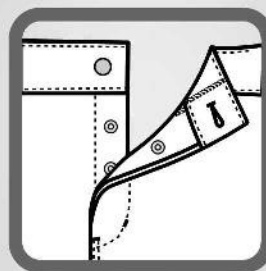
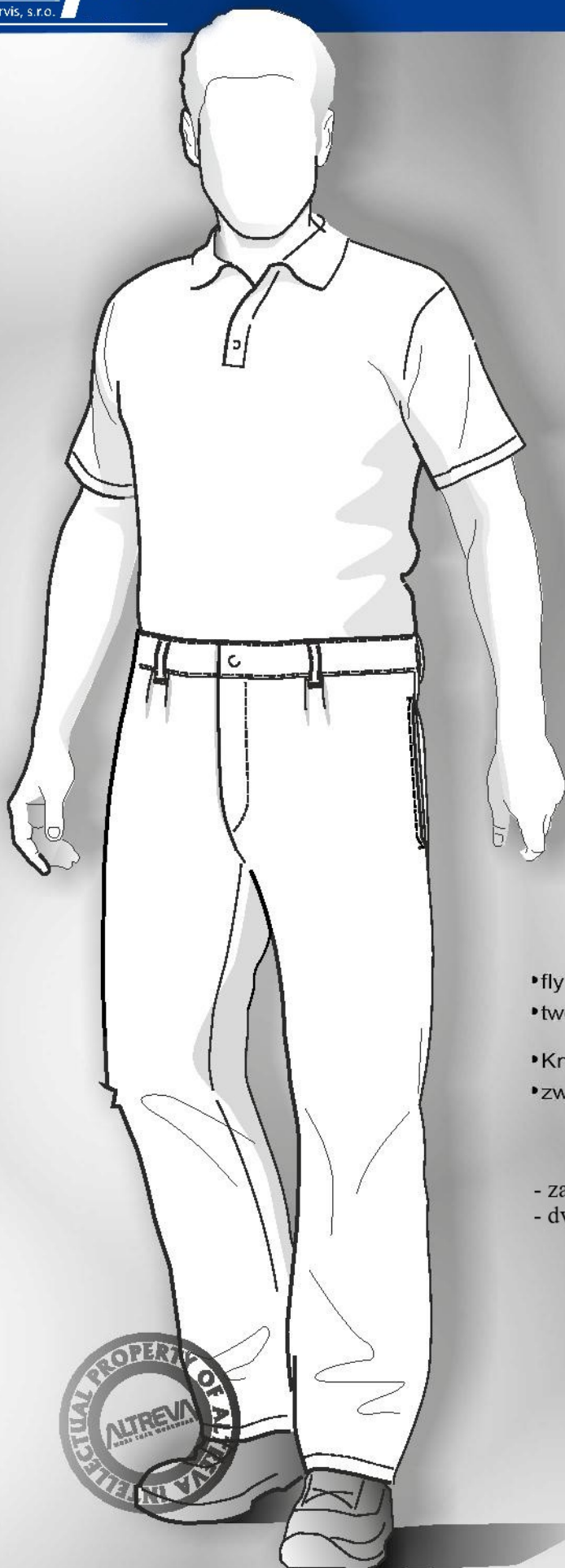




FOOD COLLECTION



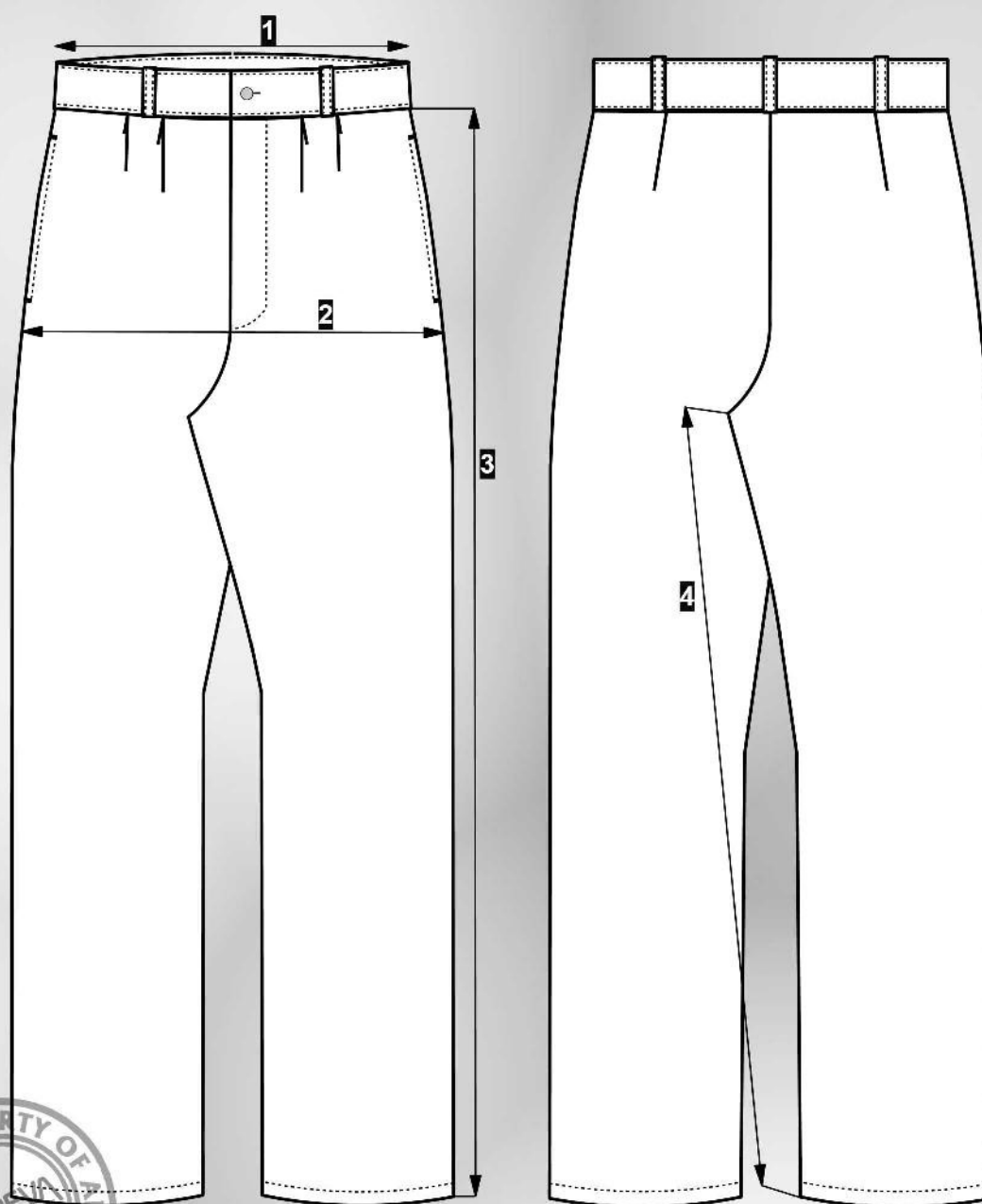
- fly fastened with push buttons and metal button
- two side pockets at the seam
- Knopf- und Druckknopfverschluss
- zwei Taschen in der Seitennaht

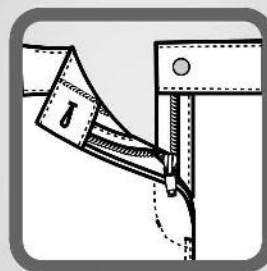
- zapínané na patenty a kovové gombíky
- dve bočné vrecká vo šve

Peter Gál
0915 282 476
gal@agaltextil.sk
areta@agaltextil.sk

BA 201005		Sizes / Grösse																
		34	36	38	40	42	44	46	48	50	52	54	56	58	60	62	64	66
1	waistline width/1/2 Taillenumfang	29	31	33	35	37	39	41	43	45	47	49	51	53	55	57	59	61
2	hipline width/1/2 Hüftumfang	40	42	44	46	48	50	52	54	56	58	60	62	64	66	68	70	72
3	side length/Seitenlänge	105	105	105	105	105	105	105	105	105	107	110	110	111	111	112	112	113
4	inside length/Schrittlänge	84	84	83	83	83	83	82	81	80	81	82	82	82	82	82	82	82

max. permitted deviation of measurements of the finished clothes +/- 2 %
max. erlaubte Maßenabweichung der fertigen Bekleidung +/- 2%





- belt with elastic on sides, loops
- fly fastened with plastic zipper and metal button
- two side pockets at the seam

- elastischer Bund, Schlaufen
- Knopf- und Zippverschluss
- zwei Taschen in der Seitennaht

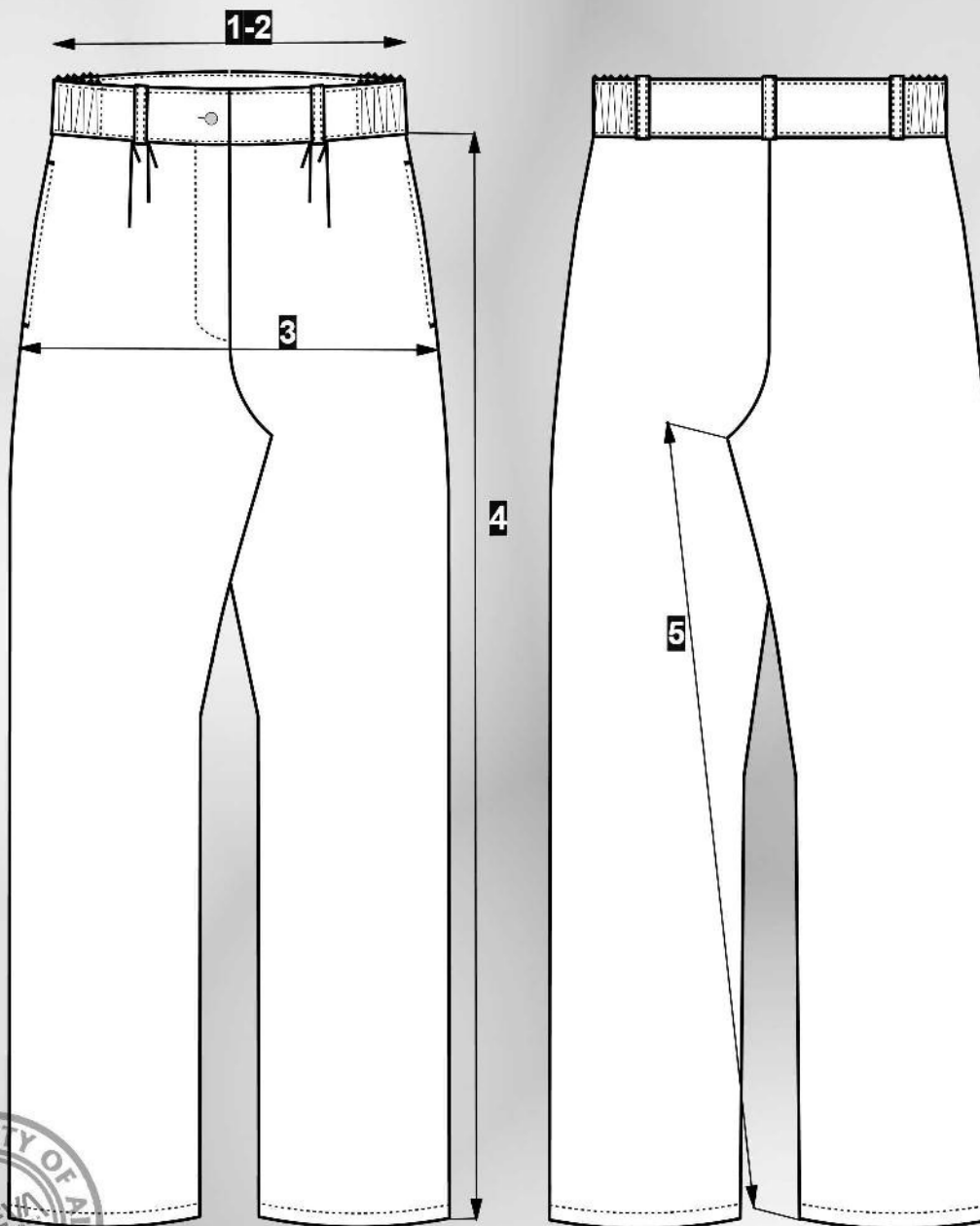
- opasok s gumou na bokoch, pútka
- chlopňa zapínaná na plastový zips a kovový gombík
- dve bočné vrecká vo šve

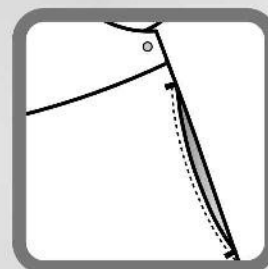
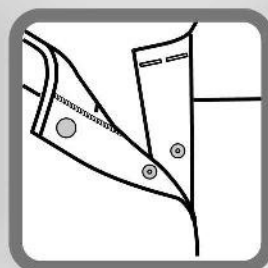
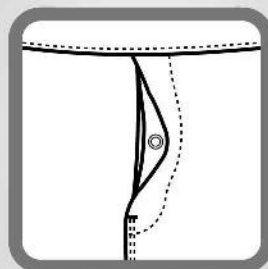
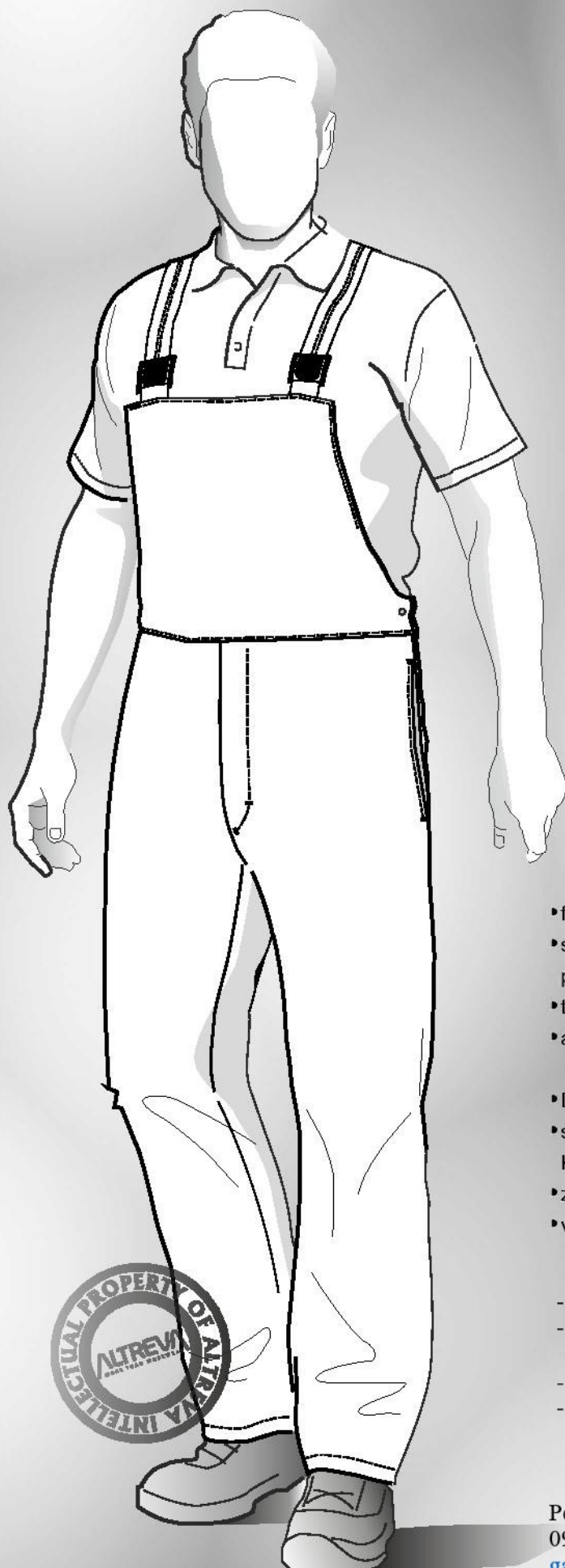


Peter Gál
0915 282 476
gal@agaltexil.sk
areta@agaltexil.sk

BA 202005		Sizes / Grösse												
		32	34	36	38	40	42	44	46	48	50	52	54	56
1	waistline width-stretched / 1/2 Taillenumfang-gezogen	37,5	39	40,5	42	44	46	48	50	52,5	55,5	58,5	61,5	64,5
2	waistline width / 1/2 Taillenumfang	32,5	34	35,5	37	39	41	43	45	47,5	50,5	53,5	56,5	59,5
3	hipline width / 1/2 Hüftumfang	49	50,5	52	53,5	55,5	57,5	59,5	61,5	63,5	66	68,5	71	73,5
4	side length / Seitenlänge	103	103	103	103	103	106	106	106	106	109	109	109	109
5	inside length / Schrittlänge	77	77	77	77	77	78	78	78	78	79	79	79	79

max. permitted deviation of measurements of the finished clothes +/- 2 %
 max. erlaubte Maßenabweichung der fertigen Bekleidung +/- 2%





- front fly fastened with push buttons
- side fly fastened with metal button and one hidden push button
- two side pockets at the seam
- adjustable knitted braces

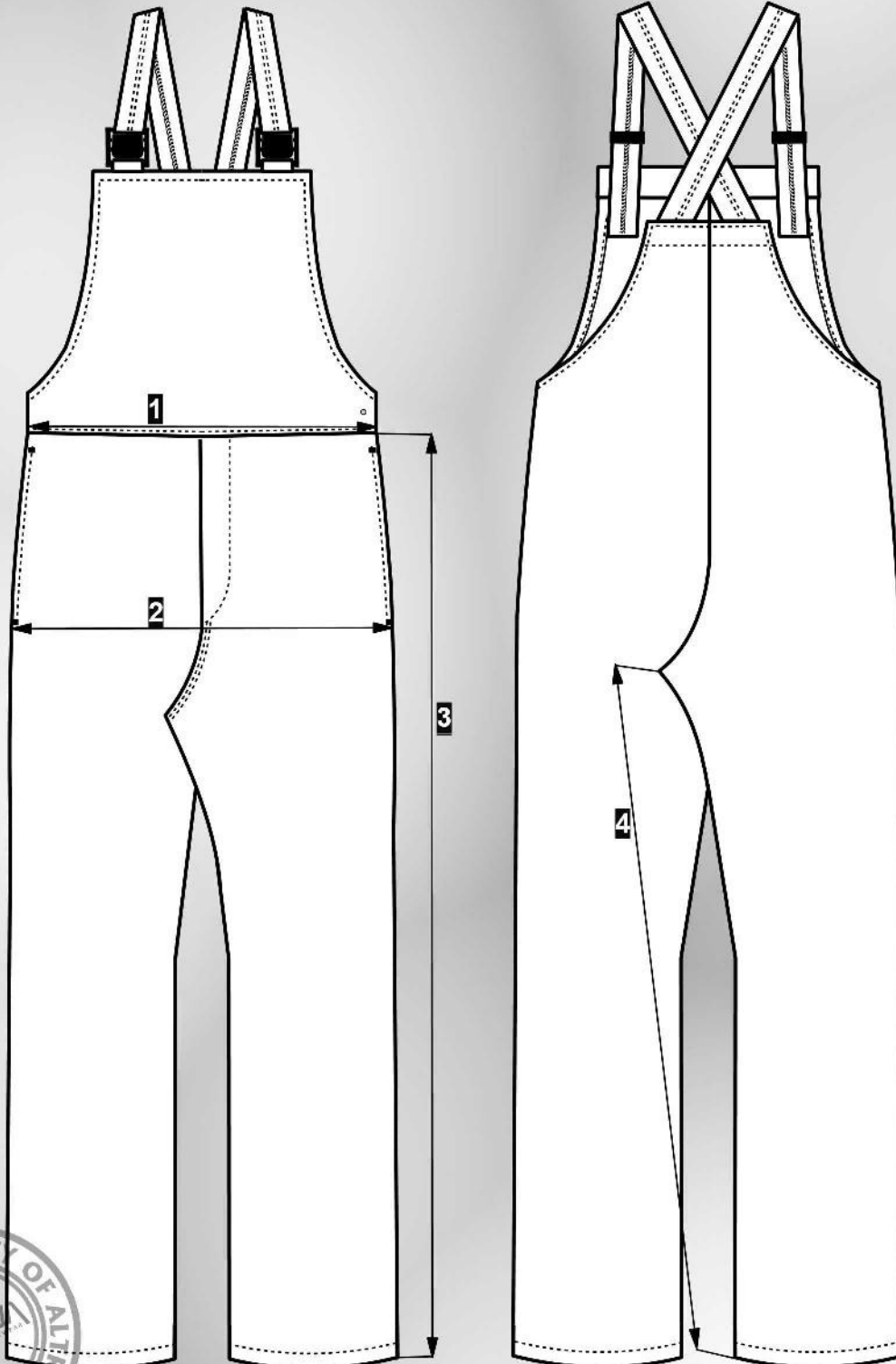
- Druckknopfverschluss
- seitlicher Verschluss mit verdecktem Druckknopf und Knopf
- zwei Taschen in der Seitennaht
- verstellbare Stretchträger

- predná chlopňa zapínaná na patenty
- bočná chlopňa zapínaná na kovový gombík a jeden skrytý gombík
- dve bočné vrecká vo šve
- nastaviteľné pletené traky

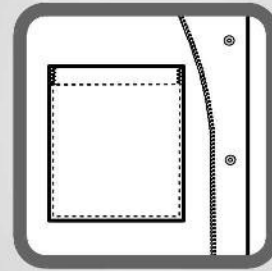


BA 701005		Sizes / Grösse												
		42	44	46	48	50	52	54	56	58	60	62	64	66
1	waistline width / 1/2 Taillenumfang	41	43	45	47	49	51	53	55	57	59	62	64	67
2	hipline width / 1/2 Hüftumfang	48,5	51	53	55	57,5	60	62	64	66,5	69	72	75	77,5
3	side length / Seitenlänge	103	104	105	107	109	110	111	113	114	115	116	117	119
4	inside length / Schrittlänge	79,5	80	80,5	82	83	84	84,5	85	86	86	86,5	86,5	87

max. permitted deviation of measurements of the finished clothes +/- 2 %
 max. erlaubte Maßenabweichung der fertigen Bekleidung +/- 2%



Peter Gál
 0915 282 476
gal@agaltexsil.sk
areta@agaltexsil.sk



- front part fastened with a push buttons
- inside chest pocket
- push buttons at the sleeves

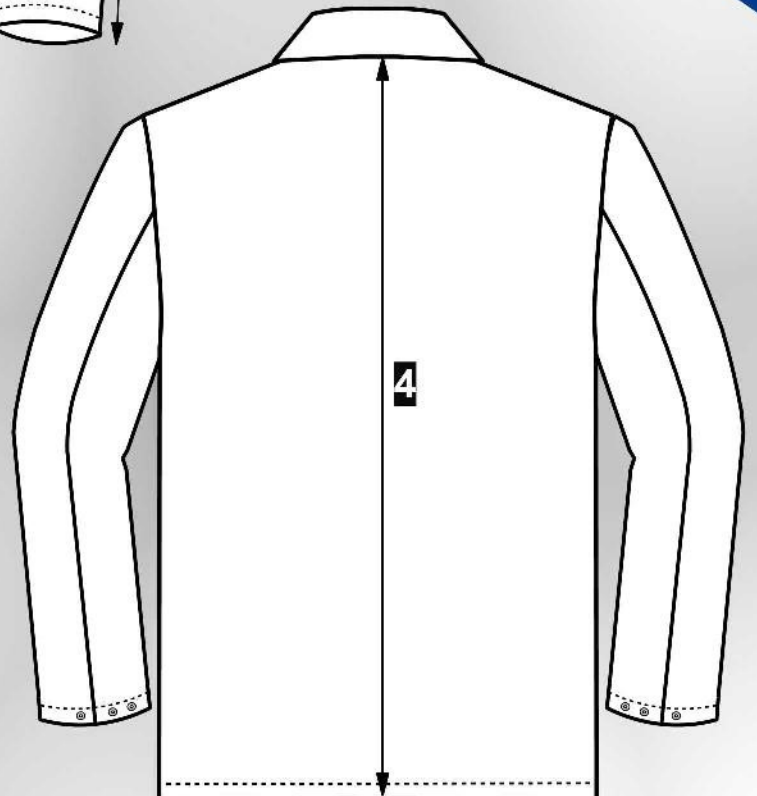
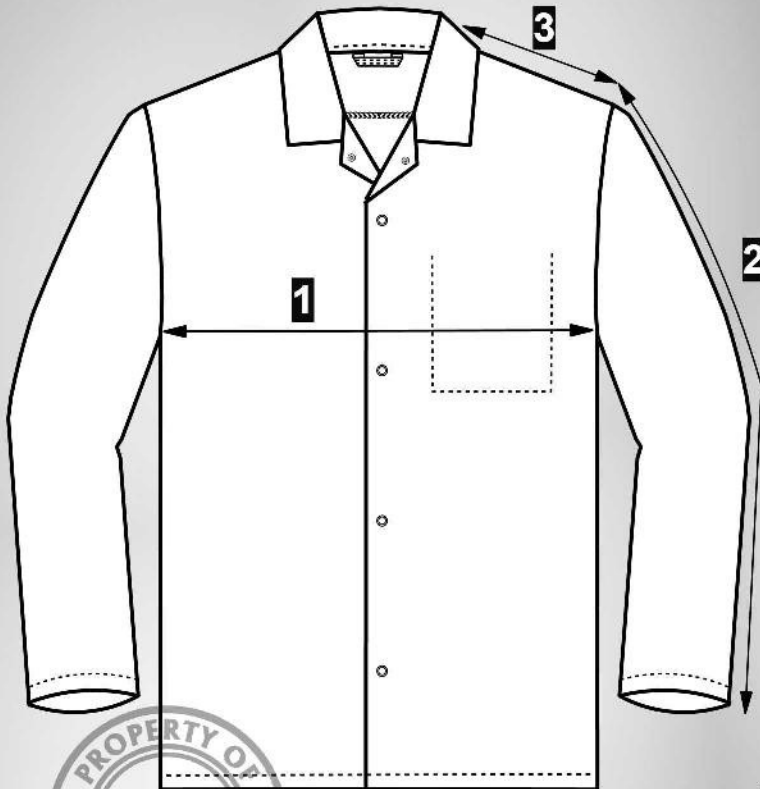
- Druckknopfverschluss
- Innentasche
- Druckknopfverschluss an Ärmeln

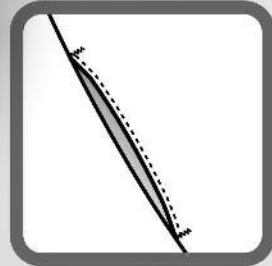
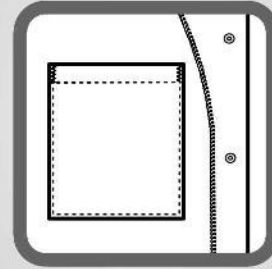
- predný diel zapínaný na gombíky
- vnútorné náprsné vrecko
- patenty na rukávoch



BA 301005		Sizes / Grösse												
		42	44	46	48	50	52	54	56	58	60	62	64	66
1	chest width / 1/2 Brustumfang	57	59	61	63	65	67	69	71	74	77	80	83	86
2	sleeve length / Ärmellänge	62	62	62	62	63	63	63	64	64	64	64	64	64
3	shoulder width / Schulterbreite	15	15	16	17	18	18	19	20	21	21	22	23	23
4	back length / Totale Länge	75	75	75	75	75	75	75	75	75	75	75	75	75

max. permitted deviation of measurements of the finished clothes +/- 2 %
 max. erlaubte Maßenabweichung der fertigen Bekleidung +/- 2%





- front part fastened with a push buttons
- inside chest pocket
- two side pockets at the seam
- push buttons at the sleeves

- Druckknopfverschluss
- Innentasche
- zwei Taschen in der Seitennaht
- Druckknopfverschluss an Ärmeln

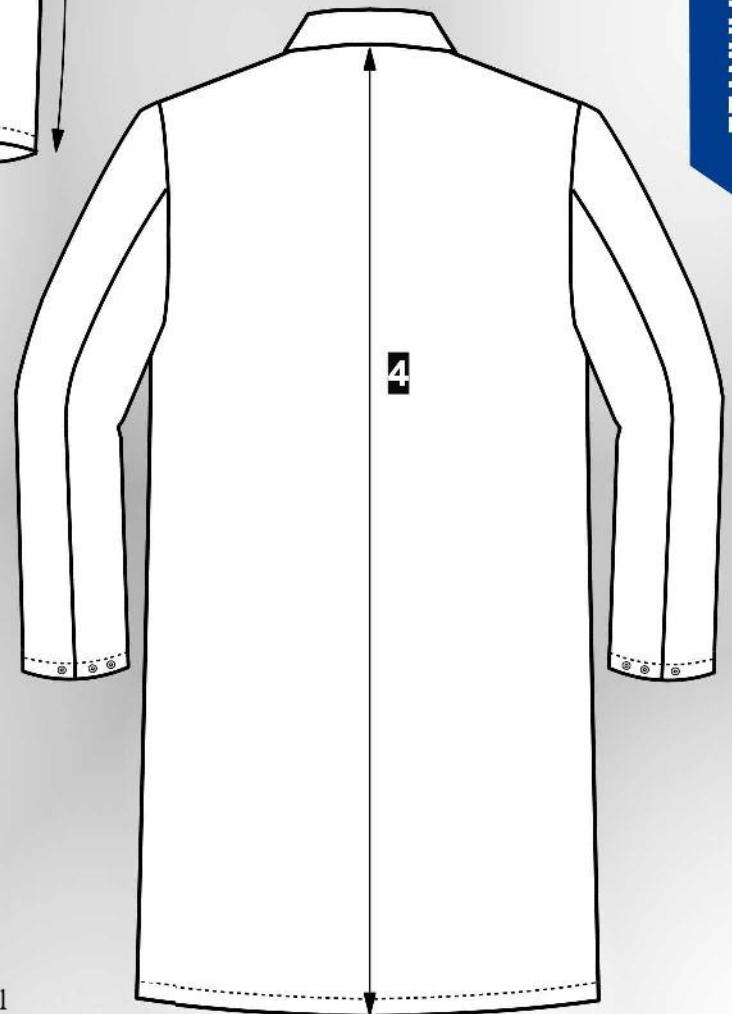
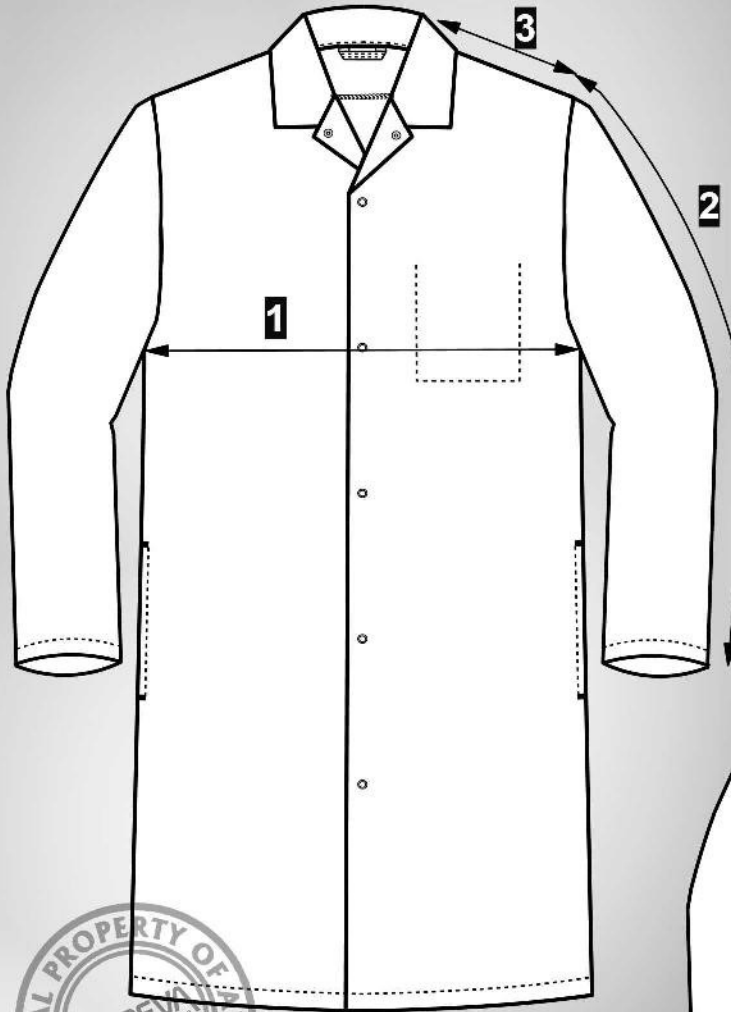
- predná časť zapínaná na patenty
- vnútorné náprsné vrecko
- dve bočné vrecká vo šve
- patenty na rukávoch

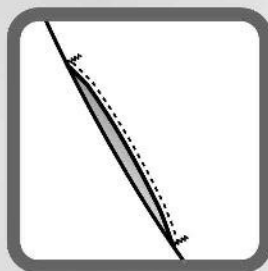
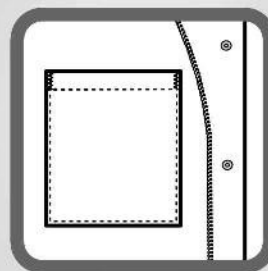


Peter Gál
0915 282 476
gal@agaltexil.sk
areta@agaltexil.sk

BA 601005		Sizes / Grösse												
		42	44	46	48	50	52	54	56	58	60	62	64	66
1	chest width / 1/2 Brustumfang	57	59	61	63	65	67	69	71	74	77	80	83	86
2	sleeve length / Ärmellänge	62	62	62	62	63	63	63	64	64	64	64	64	64
3	shoulder width / Schulterbreite	15	15	16	17	18	18	19	20	21	21	22	23	23
4	back length / Totale Länge	105	105	105	105	105	105	105	105	105	105	105	105	105

max. permitted deviation of measurements of the finished clothes +/- 2 %
 max. erlaubte Maßenabweichung der fertigen Bekleidung +/- 2%



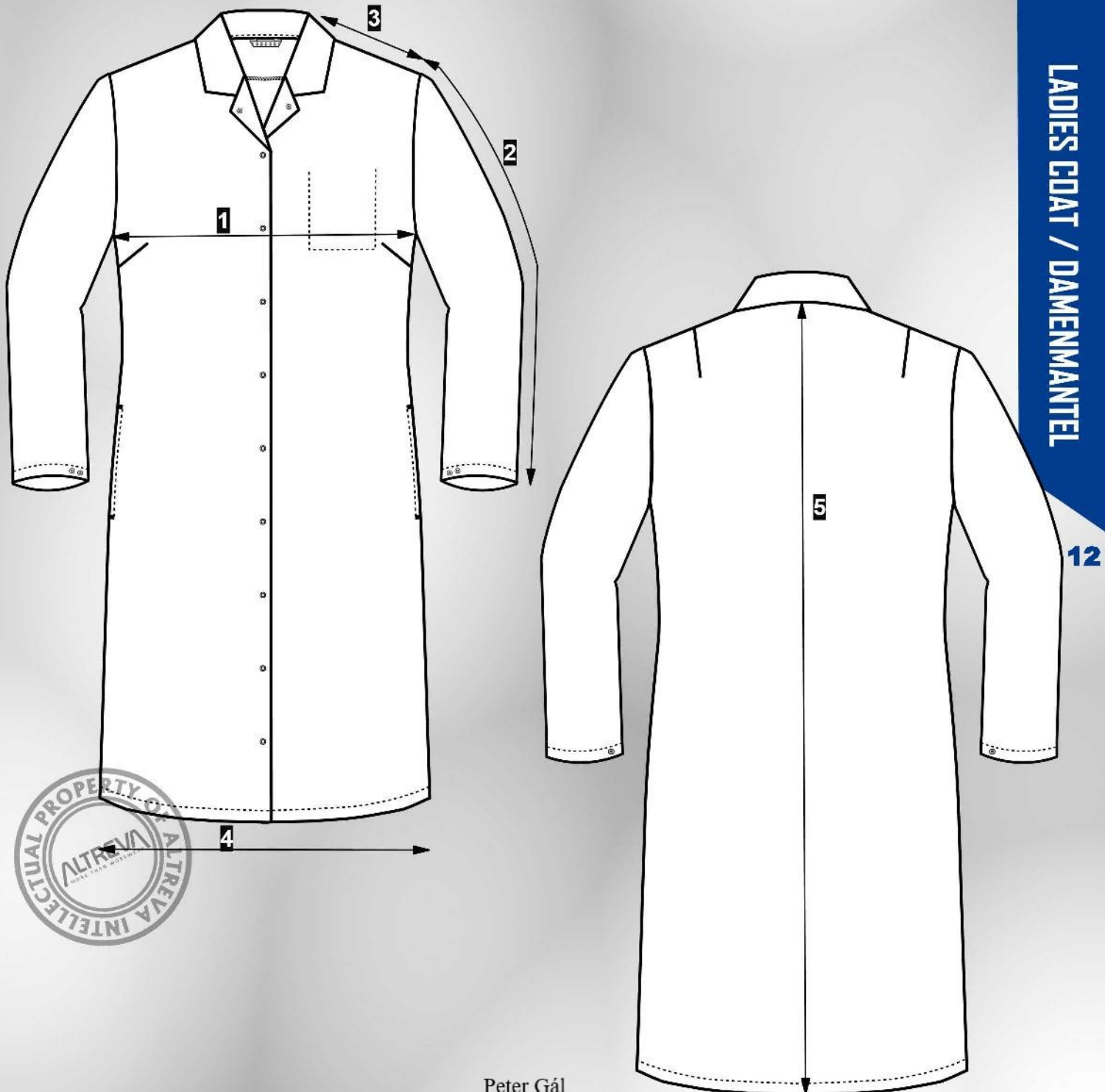


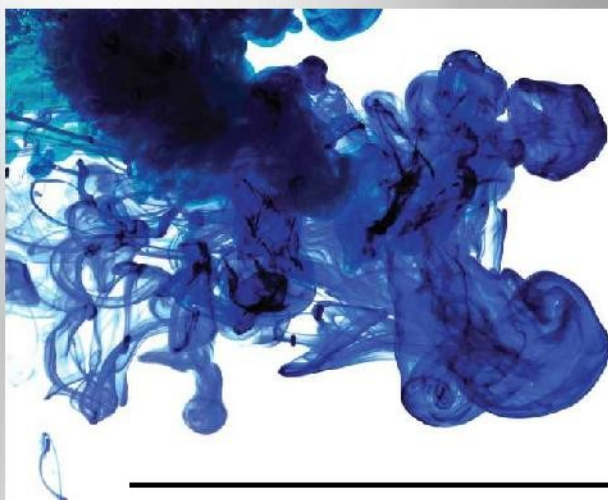
- front part fastened with a push buttons
- inside chest pocket
- two side pockets at the seam
- push buttons at the sleeves
- Druckknopfverschluss
- Innentasche
- zwei Taschen in der Seitennaht
- Druckknopfverschluss an Ärmeln

- predný diel zapínaný na pattern
- vnútorné náprsné vrecko
- dve bočné vrecká vo šve
- patenty na rukávoch

BA 005005		Sizes / Grösse												
		34	36	38	40	42	44	46	48	50	52	54	56	58
1	chest width / 1/2 Brustumfang	51	53	55	57	59	61	63	66	69	71	74	76	78
2	sleeve length / Ärmellänge	56	57	58	58	59	59	60	60	61	61	62	62	63
3	shoulder width / Schulterbreite	12	13	13	14	14	15	15	15	15	16	16	17	18
4	bottom width / 1/2 Saumbreite	64	66	68	69	71	73	76	79	82	85	89	92	95
5	back length / Totale Länge	105	105	105	105	105	105	105	105	105	105	105	105	105

max. permitted deviation of measurements of the finished clothes +/- 2 %
 max. erlaubte Maßenabweichung der fertigen Bekleidung +/- 2%





Quality	DELTA
Fabric Weight	210gsm
Composition	Polyester 85% / Cotton 35%
Useable Width	160cm
Nominal Length	100cm
Weave	2/1 twill
Ends And Picks Per 2.5cm	113 X 56 Nominal
Thread Count	20's No (34's Nm)
Application	Workwear jackets, trousers and coveralls
Washing Instructions	



Physical Properties

	Warp	Weft
Tensile Strength: (BS EN ISO 13934-1:1999)	1250 N	620 N
Tear Strength: Mean of Maxima (BS EN ISO 13937-3:2000)	42 N	32 N
Tear Strength: Mean of Mean (BS EN ISO 13937 3:2000)	32 N	24 N
Washing Shrinkage (max): (BS EN ISO 6330:2001, 1A/D)	2%	2%
Heat Shrinkage (max): (DIN STAN 03-65/4 160°C)	2%	2%
Abrasion Resistance: (12kPa) (BS EN ISO 12947-2:1999)	45,000 rubs	
Pilling Resistance: (BS EN ISO 12945: 2:2001)	3-4	

Amended Values For White Fabric

	Warp	Weft
Tensile Strength: (BS EN ISO 13934 1:1999)	1220 N	620 N
Tear Strength: Mean of Maxima (BS EN ISO 13937-3:2000)	36 N	30 N
Tear Strength: Mean of Mean (BS EN ISO 13937 3:2000)	26 N	23 N

The data quoted is based upon specific materials and tested by sources believed to be reliable and Carrington make no guarantee, express or implied as to use, handling or possession of its products.

N.B. Although there may be small differences between the British Standard and the ISO test method quoted, they are the same in all major respects.

Colour Fastness

	Pale	Mid	Dark
Wash Fastness BS EN ISO 105-C06: Method E2S (95°C)			
Colour Change	4-5	4	4
Stain on Polyester	4	3-4	3
Stain on Cotton	4	3-4	2-3
Dry Clean Fastness BS EN ISO D01			
Colour Change	4-5	4	4
Persepiration Fastness BS EN ISO 105-E04: Acid/Alkali			
Colour Change	4-5	4-5	4-5
Staining	1	3-1	3
Rub Fastness BS EN ISO 105-X12:1995			
Wet	3-4	3	2
Dry	4-5	4	3-4
Light Fastness BS EN 20105/ISO 105-B02			
Light Fastness	4	4	4

These values are for guidance only, some colours will be better others worse. Please contact your Carrington representative for specific shade details.

Please consult Carrington for specific values.

Authorised by: SVM
Issue Date: 07/05/2010
Issue No: 9
Status: Current

Peter Gál
0915 282 476
gal@agaltextil.sk
areta@agaltextil.sk

Head Office (UK)
Carrington Workwear Ltd
Market Street
Adlington
Lancashire
PR7 4JL
Tel: +44 (0)1257 476850
Fax: +44 (0)1257 476852
Email: info@carrington.uk.com
www.carrington.uk.com

France
Carrington
France Srl
83 Rue de la Gare
59170 Croix
France
Tel: +33 (0)3 2098 6646
Fax: +33 (0)3 2098 6609
Email: france@carrington.eu.com
www.carrington.eu.com

Germany
Carrington
Deutschland GmbH
Hamburgerstr 24
27725 Wörpswede
Germany
Tel: +49 (0)47 92950191
Fax: +49 (0)47 92 950192
Email: germany@carrington.eu.com
www.carrington.eu.com

www.carrington.uk.com